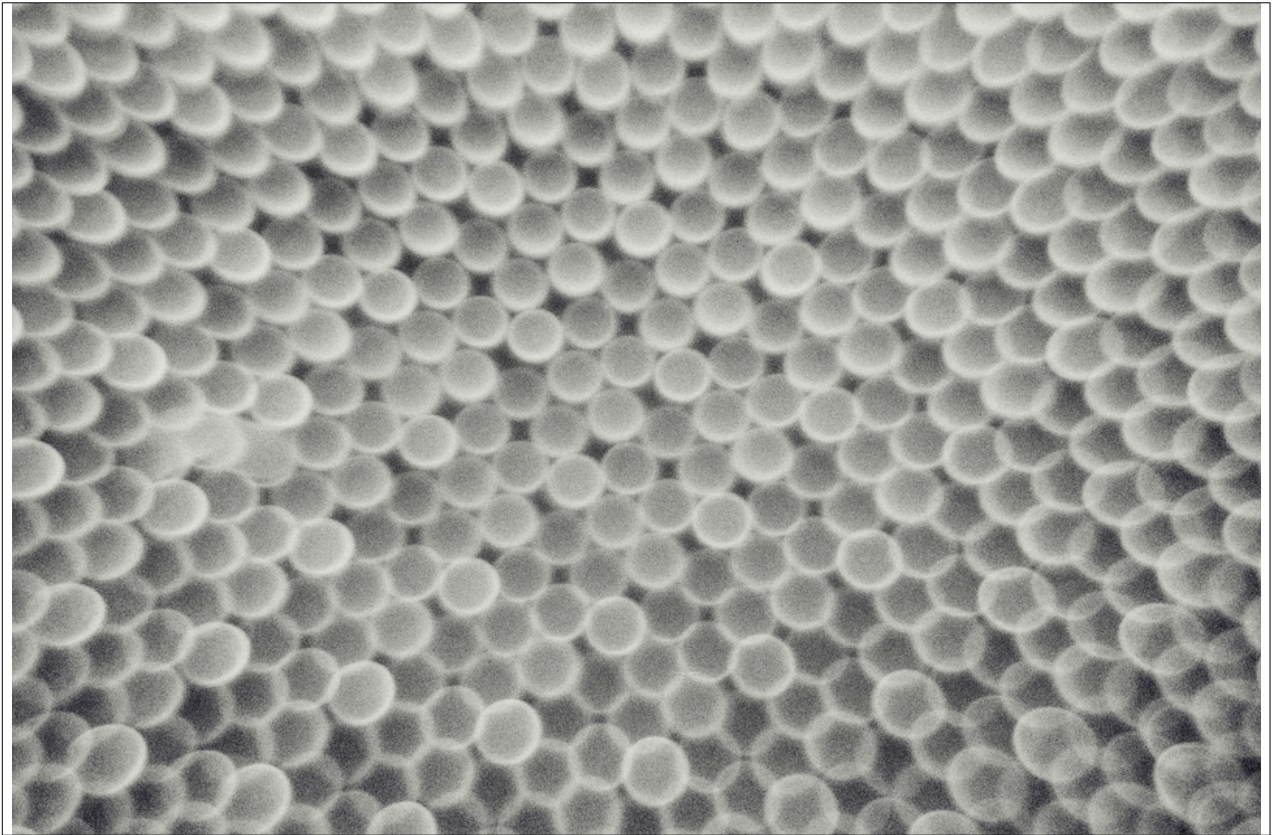


013640

Surface II




Picture Description¹⁾

A high-angle, close-up, grayscale photograph of a dense, ordered arrangement of small, spherical objects.

Analysis¹⁾

This black and white photograph presents a densely packed field of spherical objects, arranged in a repeating pattern reminiscent of a cellular structure or tightly clustered microscopic organisms. The objects appear slightly out of focus, creating a soft, textured effect. The monochromatic palette emphasizes the tonal variations and the play of light and shadow across the rounded surfaces, lending a subtle depth and dimensionality to the overall composition. The uniformity of the shapes and their precise arrangement evoke a sense of order and underlying geometry, contrasting with the inherent imperfections and organic feel of the individual elements.

Picture Data

	Type / Size	By	Web Link
Exposure	Analog	Frank Titze	
Developing	Analog	Frank Titze	
Enlarging	—	—	
Scanning	Digital	Frank Titze	
Processing	Digital	Frank Titze	
	Exposure	Processing	Published
Dates	—	11/2022	12/2025
	Width	Height	Bits/Color
Original Size	7461 px	4974 px	16
Ratio ca.	1.50	1	—
Exposure	24x36 mm		
Location	—		
Title (German)	Surface II		

Remarks

¹⁾Text is AI generated - Reviewed / Corrected