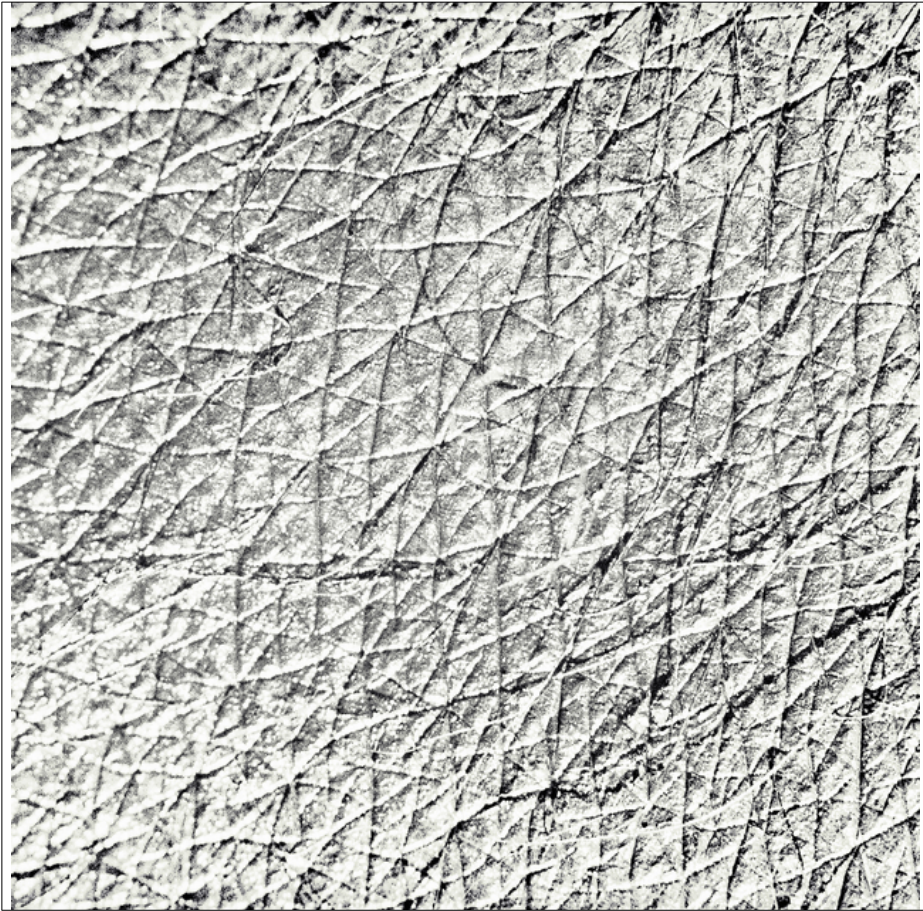


013635

Skin II




Picture Description¹⁾

A close-up, monochromatic photograph showcasing the textured pattern of skin.

Analysis¹⁾

This black and white photograph presents a highly magnified view of a textured surface of human skin. The intricate pattern is composed of numerous intersecting lines, forming small, irregular diamond shapes. The texture is rough and detailed, with subtle variations in light and shadow that enhance the depth and three-dimensionality of the surface. The overall effect is reminiscent of a microscopic landscape, inviting the viewer to explore the minute details of the material.

Picture Data

	Type / Size	By	Web Link
Exposure	Analog	Frank Titze	
Developing	Analog	Frank Titze	
Enlarging	—	—	
Scanning	Digital	Frank Titze	
Processing	Digital	Frank Titze	
	Exposure	Processing	Published
Dates	—	11/2022	12/2025
	Width	Height	Bits/Color
Original Size	4993 px	4993 px	16
Ratio ca.	1	1	—
Exposure	24x36 mm		
Location	—		
Title (German)	Haut II		

Remarks

¹⁾Text is AI generated - Reviewed / Corrected