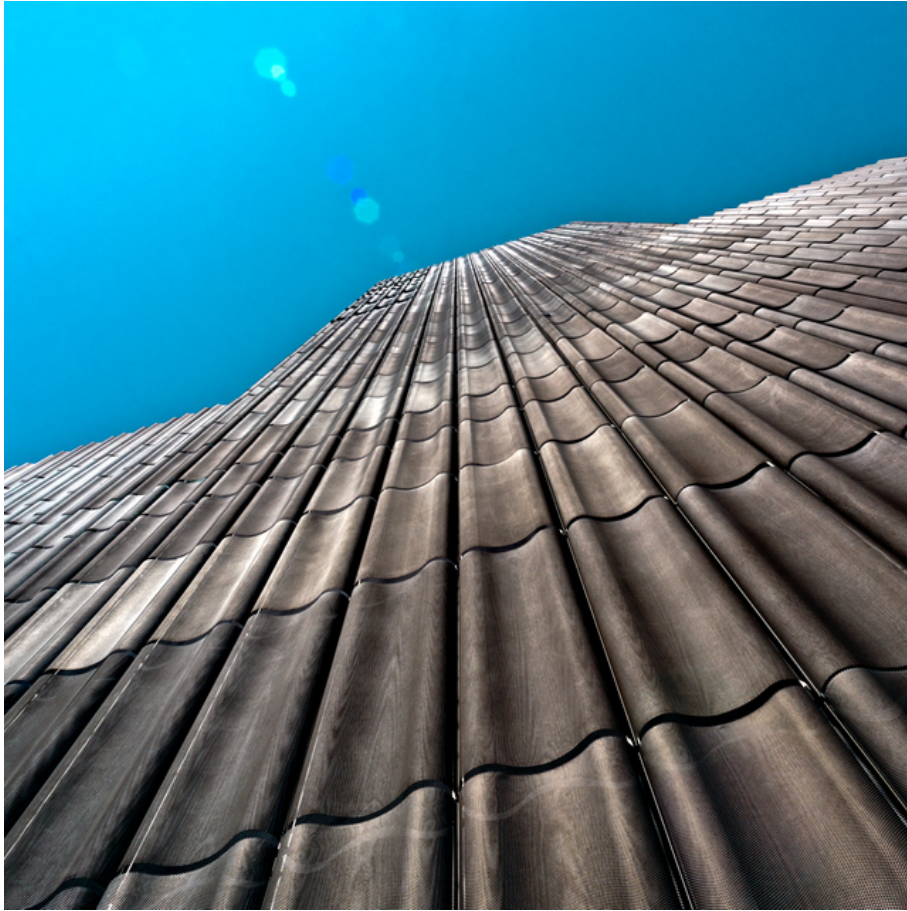


012488

Museum of Design II




Picture Description¹⁾

A low-angle shot showcases the textured pattern of a modern building facade against a clear blue sky.

Analysis¹⁾

This photograph presents a dramatic, low-angle perspective of a building facade under a clear, vibrant blue sky. The facade is composed of a repeating pattern of dark, textured elements, possibly tiles or panels, arranged in vertical rows. The unique angle of the shot accentuates the lines and curves of the building, creating a sense of height and depth. The bright, uncluttered sky provides a striking contrast to the detailed texture of the building's surface, highlighting the geometric arrangement and subtle variations in color and tone. The presence of lens flare in the upper left adds a touch of dynamism to the photograph, contributing to the overall abstract yet architectural feel.

Picture Data

	Type / Size	By	Web Link
Exposure	Digital	Frank Titze	
Developing	—	—	
Enlarging	—	—	
Scanning	—	—	
Processing	Digital	Frank Titze	
	Exposure	Processing	Published
Dates	08/2022	09/2022	03/2025
	Width	Height	Bits/Color
Original Size	4912 px	4912 px	16
Ratio ca.	1	1	—
Exposure	24x36 mm		
Location	—		
Title (German)	Museum für Gestaltung II		

Remarks

¹⁾Text is AI generated - NOT reviewed and/or corrected