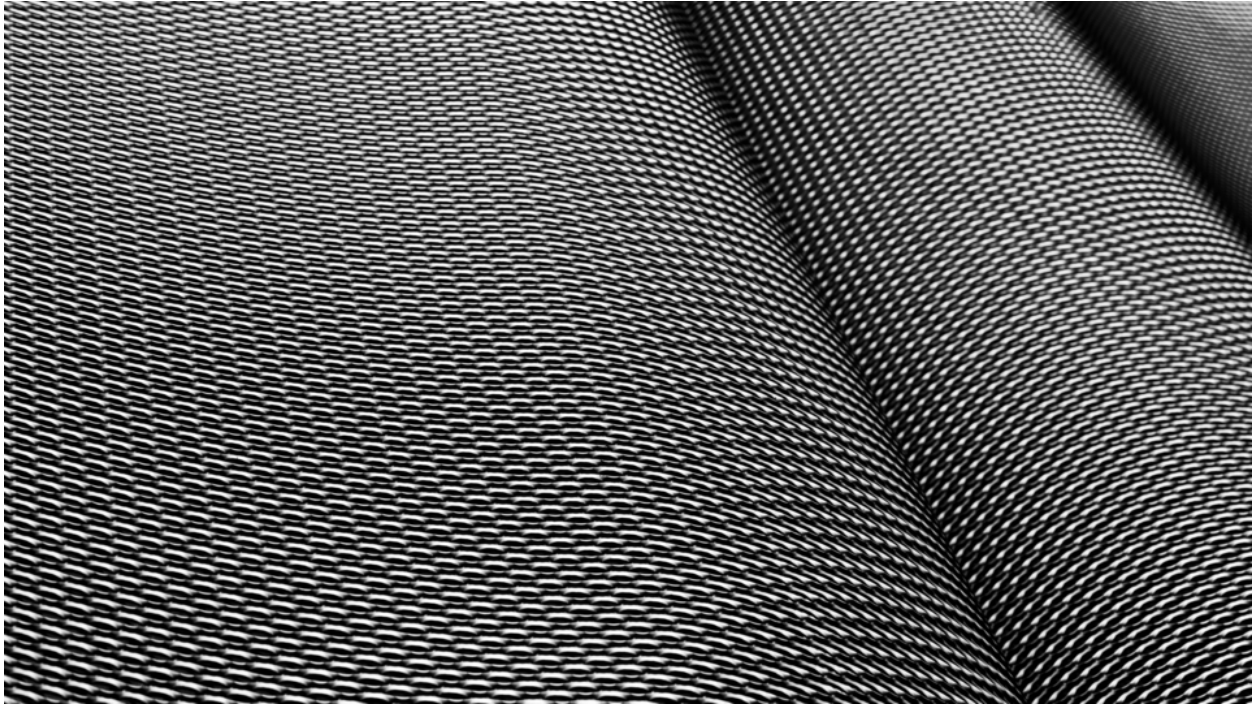


# 012476

Steel Wave III




## Picture Description<sup>1)</sup>

A close-up shot of a black and white woven material, showing a textured surface with depth and curvature.

## Analysis<sup>1)</sup>

The photograph presents a close-up of a textured surface, likely a textile or woven material. The monochromatic palette emphasizes the intricate pattern of interwoven strands, creating a mesmerizing visual rhythm. The fabric's folds and curves add depth and dimension, hinting at its pliability and the way it interacts with light. The photograph evokes a sense of tactile richness, inviting viewers to imagine the feel of the material beneath their fingertips.

**Picture Data**

	Type / Size	By	Web Link
Exposure	Digital	Frank Titze	
Developing	—	—	
Enlarging	—	—	
Scanning	—	—	
Processing	Digital	Frank Titze	
	Exposure	Processing	Published
Dates	08/2022	01/2023	03/2025
	Width	Height	Bits/Color
Original Size	7360 px	4140 px	16
Ratio ca.	1.78	1	—
Exposure	24x36 mm		
Location	—		
Title (German)	Stahlwelle III		

**Remarks**

<sup>1)</sup>Text is AI generated - NOT reviewed and/or corrected