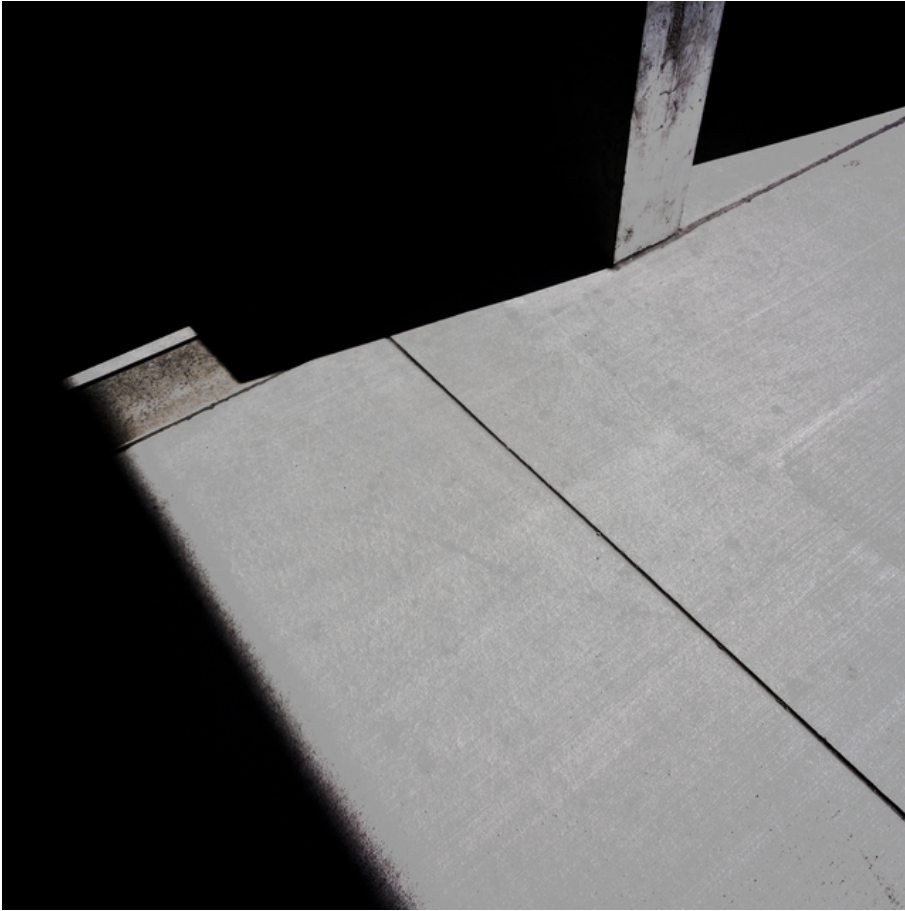


# 012467

Shadow on Concrete I




## Picture Description<sup>1)</sup>

Abstract shot of a concrete slab with a post dividing light and shadow.

## Analysis<sup>1)</sup>

This photograph presents a stark study in contrasts, using light and shadow to sculpt a minimalist composition. A concrete walkway dominates the scene, its textured surface divided by a clean, dark line that emphasizes the geometric nature of the space. To the left, an area of deep blackness creates a dramatic void, contrasting sharply with the illuminated concrete. A weathered white post intersects the edge of the walkway, adding a vertical element and a subtle hint of age and wear. The interplay between light and dark, along with the simple forms, results in an photograph that is both striking and thought-provoking.

**Picture Data**

	Type / Size	By	Web Link
Exposure	Digital	Frank Titze	
Developing	—	—	
Enlarging	—	—	
Scanning	—	—	
Processing	Digital	Frank Titze	
	Exposure	Processing	Published
Dates	08/2022	02/2023	03/2025
	Width	Height	Bits/Color
Original Size	4904 px	4904 px	16
Ratio ca.	1	1	—
Exposure	24x36 mm		
Location	—		
Title (German)	Schatttem auf Beton I		

**Remarks**

<sup>1)</sup>Text is AI generated - NOT reviewed and/or corrected