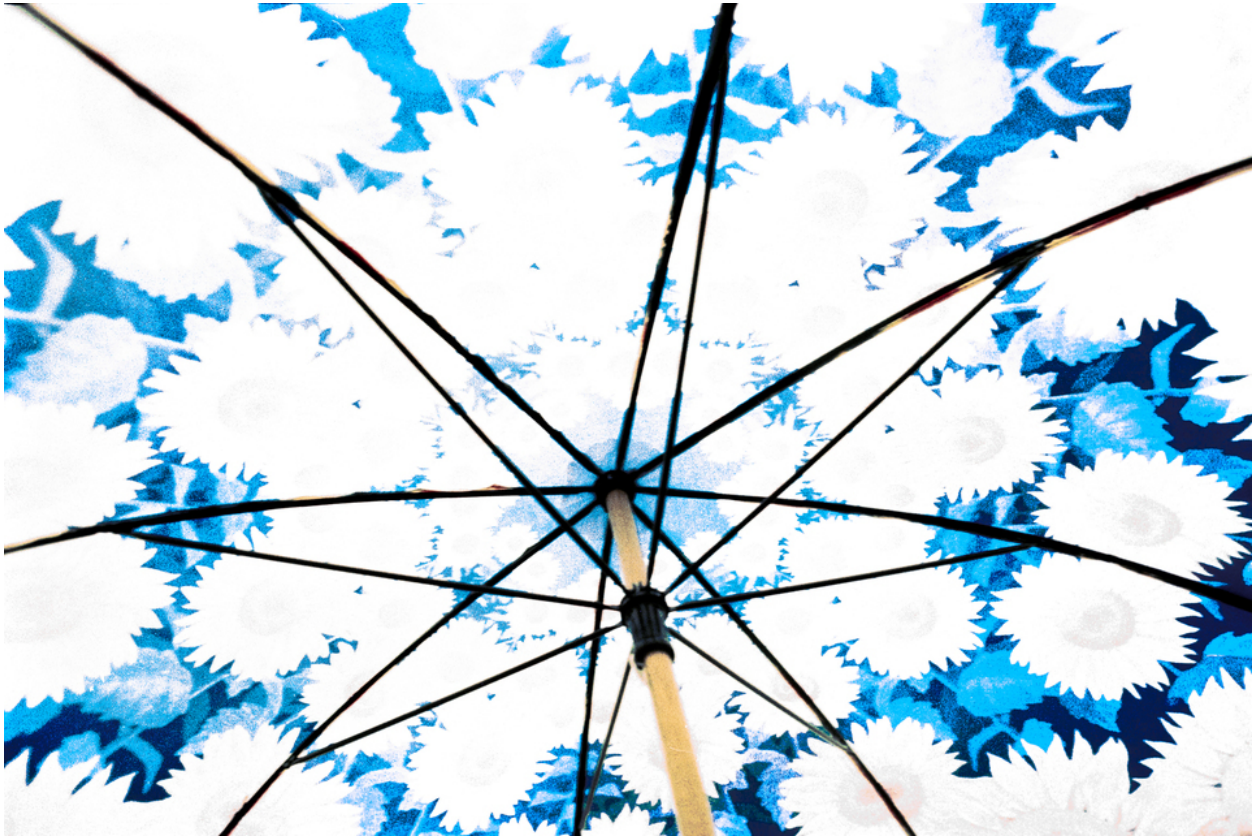


012364

Umbrella




Picture Description¹⁾

A low-angle shot of the interior of a blue and white floral patterned umbrella.

Analysis¹⁾

This captivating photograph presents an abstracted perspective from underneath a floral umbrella. The black ribs of the umbrella radiate outward from the central pole, creating a stark geometric contrast against the vibrant blue and white floral pattern of the canopy. The upward angle accentuates the repetitive floral motifs, blurring them into a dynamic, almost kaleidoscopic design. The bright, almost overexposed lighting further enhances the graphic nature of the photograph, lending it a dreamlike quality. It's a striking exploration of pattern, perspective, and the interplay of light and shadow.

Picture Data

	Type / Size	By	Web Link
Exposure	Analog	Frank Titze	
Developing	Analog	Frank Titze	
Enlarging	—	—	
Scanning	Digital	Frank Titze	
Processing	Digital	Frank Titze	
	Exposure	Processing	Published
Dates	—	12/2024	02/2025
	Width	Height	Bits/Color
Original Size	7594 px	5063 px	16
Ratio ca.	1.50	1	—
Exposure	24x36 mm		
Location	—		
Title (German)	Regenschirm		

Remarks

¹⁾Text is AI generated - NOT reviewed and/or corrected