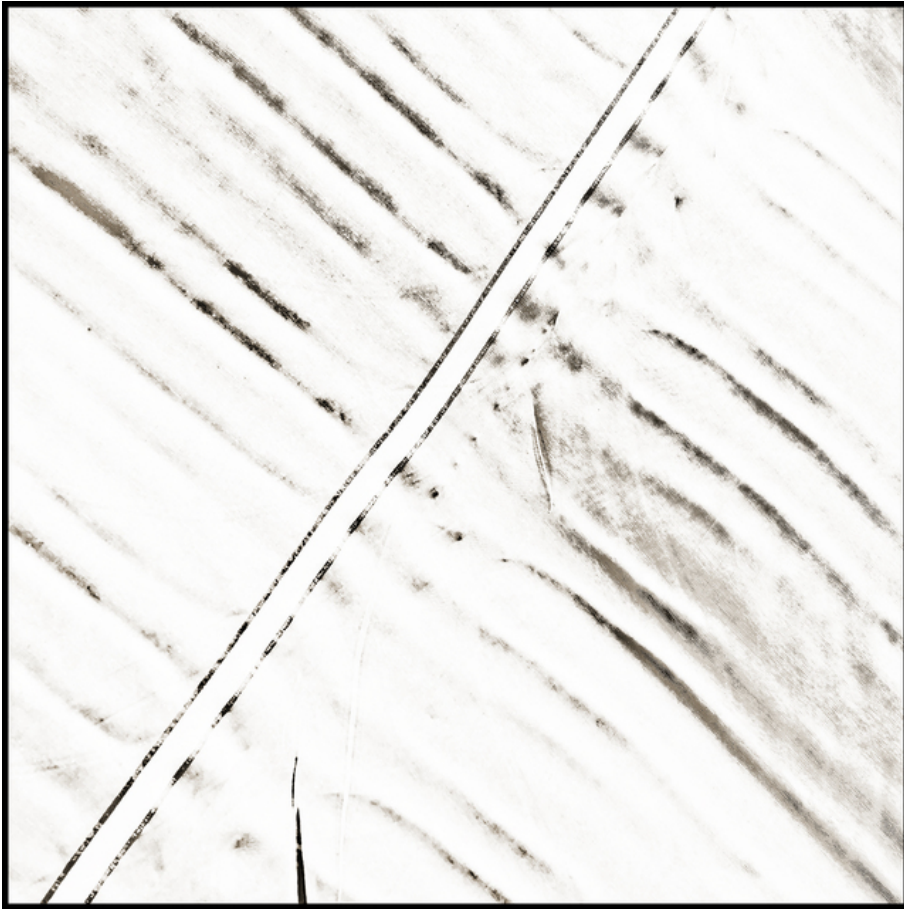


# 011790

Fabric IV




## Picture Description<sup>1)</sup>

Aerial view of agricultural fields with diagonal patterns and a dividing road.

## Analysis<sup>1)</sup>

This aerial view, rendered in shades of white, beige, and dark brown, presents an abstract representation of a landscape. Bold, diagonal lines create a rhythmic pattern across the frame, suggestive of plowed fields or agricultural rows. A distinct, lighter-toned line bisects this pattern, possibly representing a road or pathway cutting through the land. The contrast between the dark and light areas gives the photograph a strong visual texture, evoking a sense of depth and movement. Its high-contrast, monochrome palette lends it a stark, almost graphic quality, inviting contemplation on the relationship between human intervention and the natural world.

**Picture Data**

	Type / Size	By	Web Link
Exposure	Digital	Frank Titze	
Developing	—	—	
Enlarging	—	—	
Scanning	—	—	
Processing	Digital	Frank Titze	
	Exposure	Processing	Published
Dates	05/2022	09/2022	08/2024
	Width	Height	Bits/Color
Original Size	4982 px	4982 px	16
Ratio ca.	1	1	—
Exposure	24x36 mm		
Location	—		
Title (German)	Gewebe IV		

**Remarks**

<sup>1)</sup>Text is AI generated - NOT reviewed and/or corrected