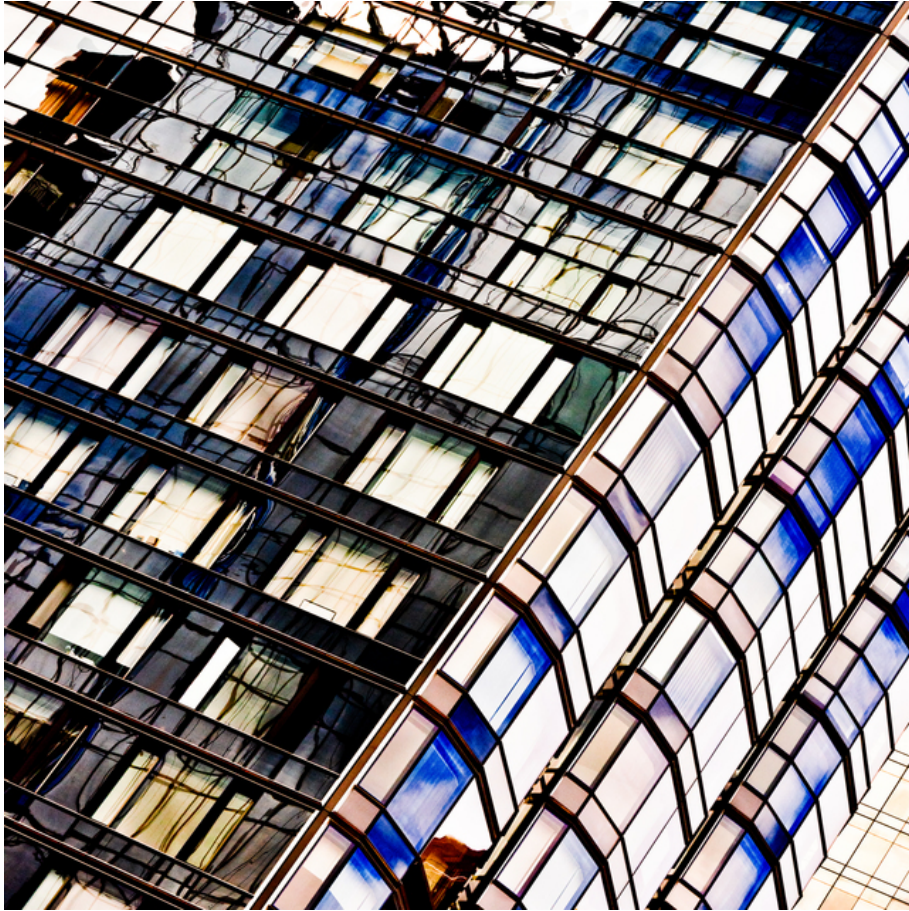


010044

Reflexion over the Edge




Picture Description¹⁾

An abstract architectural shot of two buildings with many windows at sharp angles.

Analysis¹⁾

This captivating abstract photograph presents a close-up of a modern architectural facade, dominated by a rhythmic grid of windows. The interplay of light and shadow creates a mesmerizing effect, as reflections distort and fragment the surrounding environment. The composition is bisected diagonally, revealing two distinct sections: one characterized by dark, reflective glass with abstract patterns, and the other by a more linear, patterned arrangement of blue and white glass. The contrasting textures and colors evoke a sense of urban dynamism and the complex interplay between the built environment and its reflections.

Picture Data

	Type / Size	By	Web Link
Exposure	Digital	Frank Titze	
Developing	—	—	
Enlarging	—	—	
Scanning	—	—	
Processing	Digital	Frank Titze	
	Exposure	Processing	Published
Dates	09/2019	09/2019	11/2022
	Width	Height	Bits/Color
Original Size	4912 px	4912 px	16
Ratio ca.	1	1	—
Exposure	24x36 mm		
Location	—		
Title (German)	Spiegelungen über die Ecke		

Remarks

¹⁾Text is AI generated - NOT reviewed and/or corrected