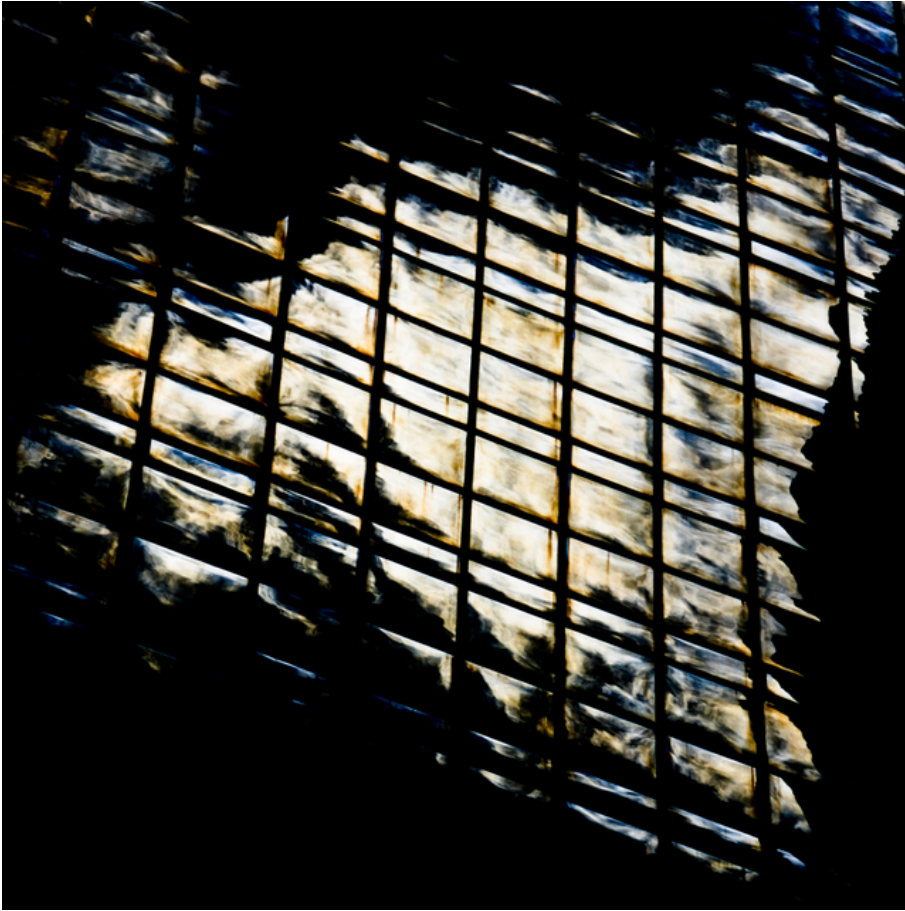


010022

Dark Reflexion




Picture Description¹⁾

An abstract shot of light reflecting through a gridded window.

Analysis¹⁾

This photograph presents an abstract view of a grid-like structure, possibly a window or architectural detail. The composition is striking due to its high contrast, with the dark surrounding space emphasizing the brightly lit grid. The individual cells of the grid appear to have a textured or distorted surface, suggesting the play of light and shadow or perhaps the presence of some material. The diagonal orientation of the grid adds a dynamic element to the photograph, creating a sense of movement and instability.

Picture Data

	Type / Size	By	Web Link
Exposure	Digital	Frank Titze	
Developing	—	—	
Enlarging	—	—	
Scanning	—	—	
Processing	Digital	Frank Titze	
	Exposure	Processing	Published
Dates	09/2019	09/2019	11/2022
	Width	Height	Bits/Color
Original Size	4912 px	4912 px	16
Ratio ca.	1	1	—
Exposure	24x36 mm		
Location	—		
Title (German)	Dunkle Spiegelung		

Remarks

¹⁾Text is AI generated - NOT reviewed and/or corrected