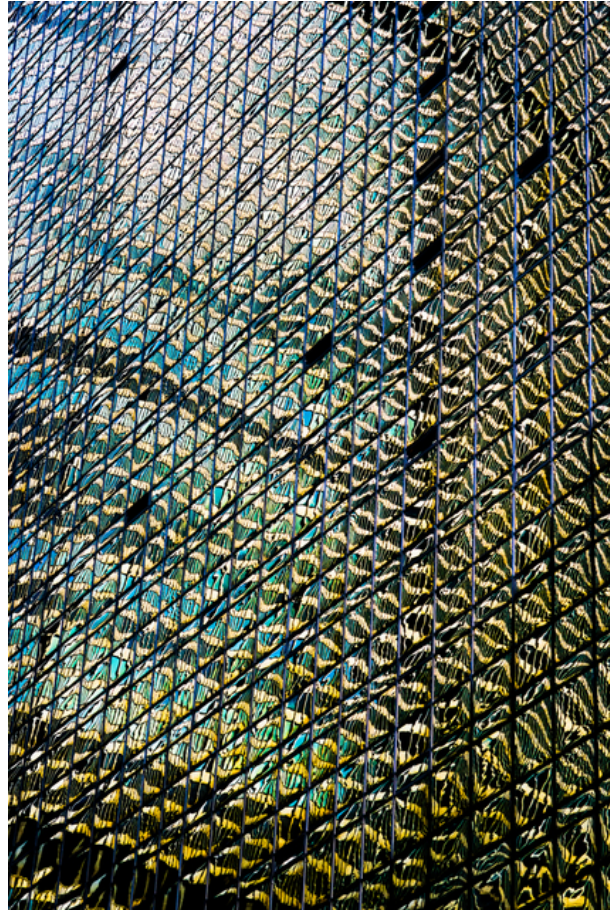


010013

Too Much I




Picture Description¹⁾

A photograph shows a tall building with numerous mirrored windows reflecting distorted images of the surroundings.

Analysis¹⁾

This photograph captures an abstract, close-up view of a building's facade. The reflective glass panels create a complex geometric pattern, with diagonal lines crisscrossing the frame. The panels reflect a distorted, almost liquid-like photograph of the surroundings, mixing shades of blue, gold, and black. The reflections give the impression of movement and depth, creating a dynamic and visually stimulating composition.

Picture Data

	Type / Size	By	Web Link
Exposure	Digital	Frank Titze	
Developing	—	—	
Enlarging	—	—	
Scanning	—	—	
Processing	Digital	Frank Titze	
	Exposure	Processing	Published
Dates	09/2019	10/2019	11/2022
	Width	Height	Bits/Color
Original Size	4912 px	7360 px	16
Ratio ca.	1	1.50	—
Exposure	24x36 mm		
Location	—		
Title (German)	Zu Viel I		

Remarks

¹⁾Text is AI generated - NOT reviewed and/or corrected