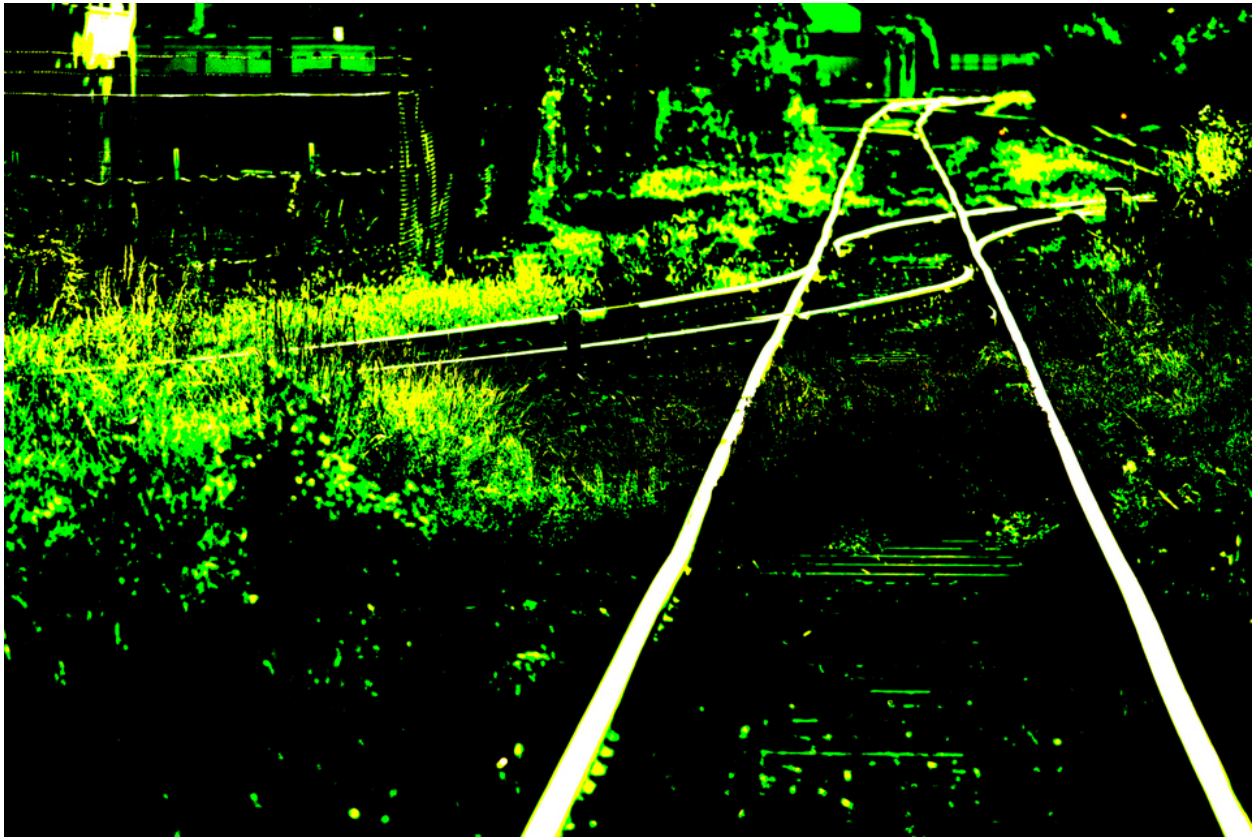


009144

Iron Line II




Picture Description¹⁾

A vibrant, high-contrast photograph of converging railway tracks leading into a dark and overgrown landscape.

Analysis¹⁾

This photograph, rendered in starkly contrasting neon green and black, depicts a railway track receding into the distance. The intense manipulation of color creates an unsettling, almost surreal atmosphere. The track, the central subject, converges towards an unseen vanishing point, inviting the viewer to contemplate notions of journey, transition, and the unknown. The surrounding foliage, also rendered in the artificial palette, feels both organic and alien. This photograph challenges our perception of the natural world, presenting a landscape that is both familiar and utterly strange.

Picture Data

	Type / Size	By	Web Link
Exposure	Digital	Frank Titze	
Developing	—	—	
Enlarging	—	—	
Scanning	—	—	
Processing	Digital	Frank Titze	
	Exposure	Processing	Published
Dates	08/2020	09/2020	12/2021
	Width	Height	Bits/Color
Original Size	7360 px	4912 px	16
Ratio ca.	1.50	1	—
Exposure	24x36 mm		
Location	—		
Title (German)	Eiserne Linie II		

Remarks

¹⁾Text is AI generated - NOT reviewed and/or corrected