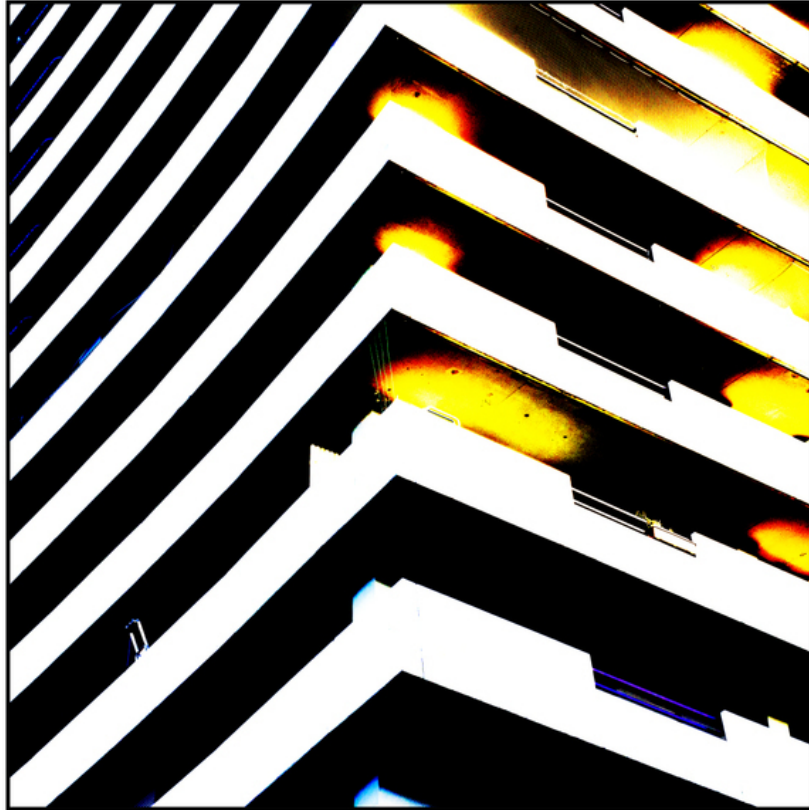


# 005948

Tower I




## Picture Description<sup>1)</sup>

An abstract architectural view of a high-rise building's facade with sharp lines and contrasting light and shadow.

## Analysis<sup>1)</sup>

This photograph presents a striking geometric composition of a building's exterior. Sharp lines define the architecture, creating a dynamic interplay of light and shadow. The bold contrasts between the bright, white surfaces and deep, dark recesses draw the viewer's eye across the photograph, highlighting the repetitive yet visually engaging pattern of the building's design. The unique perspective and treatment of light lend an abstract quality to the otherwise recognizable architectural structure.

**Picture Data**

	Type / Size	By	Web Link
Exposure	Digital	Frank Titze	
Developing	—	—	
Enlarging	—	—	
Scanning	—	—	
Processing	Digital	Frank Titze	
	Exposure	Processing	Published
Dates	12/2017	01/2018	05/2018
	Width	Height	Bits/Color
Original Size	5562 px	5562 px	16
Ratio ca.	1	1	—
Exposure	24x36 mm		
Location	—		
Title (German)	Turm I		

**Remarks**

<sup>1)</sup>Text is AI generated - NOT reviewed and/or corrected