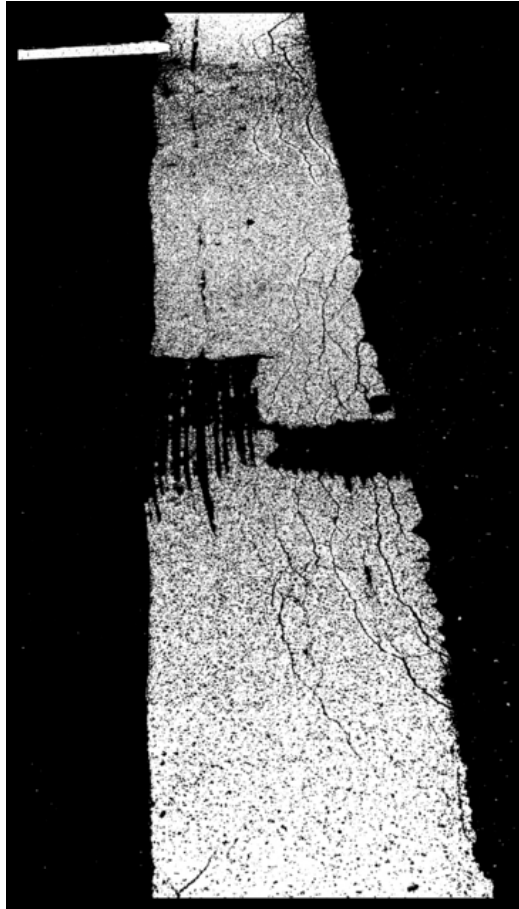


002513

Broken Tape II




Picture Description¹⁾

A high-contrast black and white photograph depicting a damaged or eroded strip of material, possibly asphalt or concrete, against a dark background.

Analysis¹⁾

This high-contrast, abstract photograph presents a fragmented, textured form against a stark black background. The form itself appears to be composed of coarse, granular material, suggesting a distressed or weathered surface. Prominent cracks and fissures run throughout, further emphasizing a sense of disintegration and decay. A dark, vertical streak bisects the composition, adding a dynamic element while contrasting sharply with the lighter, textured area. The overall effect is one of stark beauty in ruin, inviting contemplation on themes of impermanence and the passage of time.

Picture Data

	Type / Size	By	Web Link
Exposure	Digital	Frank Titze	
Developing	—	—	
Enlarging	—	—	
Scanning	—	—	
Processing	Digital	Frank Titze	
	Exposure	Processing	Published
Dates	07/2014	08/2014	09/2014
	Width	Height	Bits/Color
Original Size	4340 px	7560 px	16
Ratio ca.	1	1.74	—
Exposure	24x36 mm		
Location	—		
Title (German)	Gebrochenes Band II		

Remarks

¹⁾Text is AI generated - NOT reviewed and/or corrected