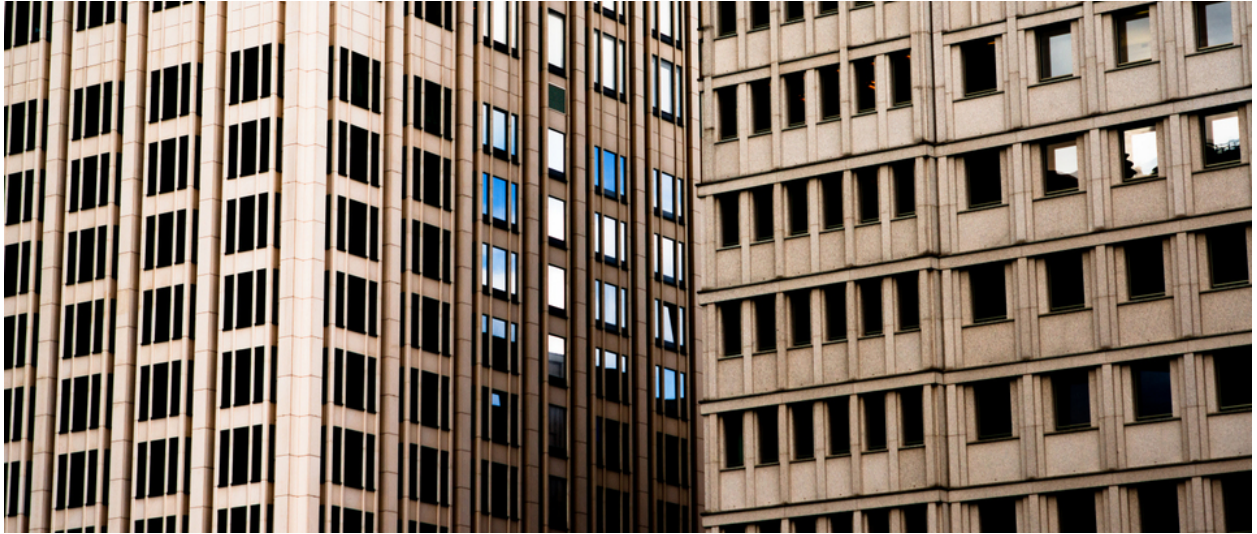


001809

Refection




Picture Description¹⁾

A close-up shot of two office buildings, showcasing their repetitive window patterns and architectural details.

Analysis¹⁾

This photograph captures the imposing facades of two towering office buildings, showcasing a study in architectural styles and textures. The building on the left exhibits a more modern design with its sleek, vertical lines and rows of uniform, dark-tinted windows, creating a sense of ordered elegance. The building on the right, however, features a more textured and slightly weathered facade with smaller, more square-shaped windows set within a grid of concrete structures. The composition emphasizes the scale and repetitive patterns of urban architecture, while the contrasting styles highlight the evolution of design and the character of the city landscape.

Picture Data

	Type / Size	By	Web Link
Exposure	Digital	Frank Titze	
Developing	—	—	
Enlarging	—	—	
Scanning	—	—	
Processing	Digital	Frank Titze	
	Exposure	Processing	Published
Dates	09/2013	10/2013	01/2014
	Width	Height	Bits/Color
Original Size	7360 px	3132 px	16
Ratio ca.	2.35	1	—
Exposure	24x36 mm		
Location	—		
Title (German)	Reflexion		

Remarks

¹⁾Text is AI generated - NOT reviewed and/or corrected