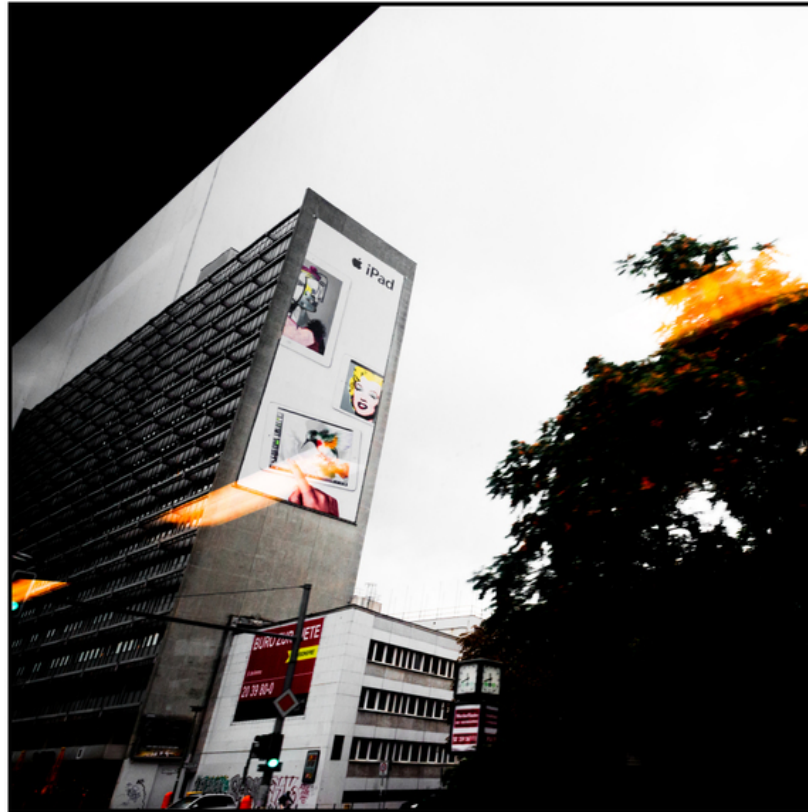


001783

Pad I




Picture Description¹⁾

A striking low-angle shot of a tall building adorned with iPad advertisements, contrasted by a dark tree and hints of city life.

Analysis¹⁾

This striking photograph captures a moment of urban juxtaposition. A stark, geometric building dominates the frame, its surface adorned with a massive advertisement for Apple's iPad. The advertisement features pop art imagery, adding a layer of cultural commentary to the scene. The building's architecture contrasts sharply with the organic forms of a tree in the foreground, its foliage rendered almost entirely in shadow. A smaller building and a street with passing traffic add further layers of urban complexity. The image's dramatic contrast and skewed perspective create a sense of unease, inviting the viewer to contemplate the interplay of technology, advertising, nature, and the built environment in the modern city.

Picture Data

	Type / Size	By	Web Link
Exposure	Digital	Frank Titze	
Developing	—	—	
Enlarging	—	—	
Scanning	—	—	
Processing	Digital	Frank Titze	
	Exposure	Processing	Published
Dates	09/2013	10/2013	01/2014
	Width	Height	Bits/Color
Original Size	5562 px	5562 px	16
Ratio ca.	1	1	—
Exposure	24x36 mm		
Location	—		
Title (German)	Pad I		

Remarks

¹⁾Text is AI generated - NOT reviewed and/or corrected