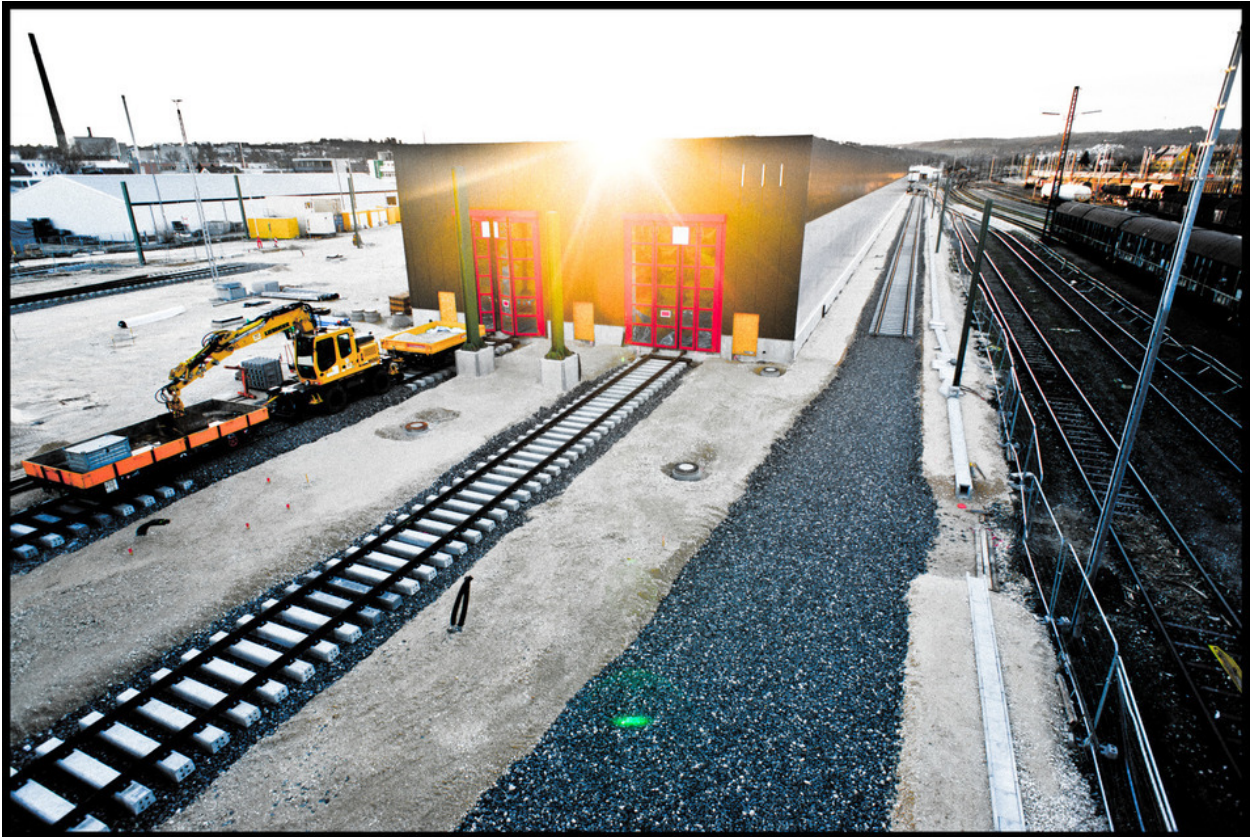


000882

Railway Construction I




Picture Description¹⁾

An eye-level outdoor shot captures a construction site at a train yard featuring new tracks, an excavator, and a modern building with vibrant red doors under the bright sunlight.

Analysis¹⁾

This photograph captures a modern railway construction site. The strong sunlight highlights a large, dark building with two prominent sets of bright pink doors. In front of the building is a newly laid railway track, with a yellow excavator and flatbed car on the left. To the right of the building runs a gravel path, followed by an established set of active railway tracks and trains in the distance. The photograph conveys a sense of progress and industrial development against the backdrop of an open sky.

Picture Data

	Type / Size	By	Web Link
Exposure	Digital	Frank Titze	
Developing	—	—	
Enlarging	—	—	
Scanning	—	—	
Processing	Digital	Frank Titze	
	Exposure	Processing	Published
Dates	12/2012	03/2013	02/2013
	Width	Height	Bits/Color
Original Size	7460 px	5012 px	16
Ratio ca.	1.49	1	—
Exposure	24x36 mm		
Location	+48.4032, +9.9684		
Title (German)	Eisenbahnbau I		

Remarks

¹⁾Text is AI generated - NOT reviewed and/or corrected